

**SONS OF THE AMERICAN LEGION
DETACHMENT OF TEXAS
MEMBERSHIP REPORT**

Updated as of 04/12/2019					
Sqdn #	Location		Goal	Actual	Percentage
DIVISION 1 (Thom Arista)		C	2107	1756	83.34%
Dist. 1 (Tim Slinkard)			146	162	110.96%
243	Mt. Vernon	C	45	74	164.44%
248	Hooks	C	24	30	125.00%
267	Marshall	C	42	37	88.10%
488	New Boston	C	35	21	60.00%

Dist. 3 (David Gilbert)			166	61	36.75%
12	Tyler	C	59	39	66.10%
15	Lindale	C	21		0.00%
353	Carthage	C	13		0.00%
418	Troup	C	59	22	37.29%
320	Gilmer		14		0.00%

Dist. 4 (Robert Johnson)			812	715	88.05%
17	Greenville	C	56	42	75.00%
21	The Colony	C	48	51	106.25%
29	Sherman	C	18	15	83.33%
62	Denison	C	51	45	88.24%
96	McKinney	C	79	54	68.35%
165	Kaufman	C	42	32	76.19%
182	Little Elm (Inactive)				0.00%
231	Pottsboro	C	82	106	129.27%
283	Bonham	C	74	62	83.78%
310	Gun Barrel City	C	98	97	98.98%
321	Plano	C	132	78	59.09%
376	Van Alstyne	C	80	84	105.00%
517	W. Tawakoni	C	52	49	94.23%

Sqdn #	Location		Goal	Actual	Percentage
Dist. 5 (Lewis Elam)			416	338	81.25%
81	Duncanville	C	54	45	83.33%
111	Cedar Hill	C	21	16	76.19%
275	Dallas	C	15	15	100.00%
184	Grand Prairie (Inactive)				0.00%
368	Richardson	C	37	17	45.95%
424	Dallas	C	28	18	64.29%
453	Dallas	C	146	136	93.15%
504	Mesquite	C	19	9	47.37%
507	Balch Springs	C	19	16	84.21%
511	Dallas	C	10	8	80.00%
597	Carrollton	C	67	58	86.57%

Dist. 12 (Fredrick James)			377	345	91.51%
60	Fort Worth	C	15	9	60.00%
135	Fort Worth				0.00%
297	Benbrook	C	22	17	77.27%
356	Azle	C	12	9	75.00%
379	Bedford	C	145	145	100.00%
516	Fort Worth	C	32	26	81.25%
569	Fort Worth	C	55	44	80.00%
624	Mansfield	C	57	73	128.07%
655	Haltom City	C	10	13	130.00%
838	Fort Worth	C	29	9	31.03%

Dist. 13 (Thomas E. Parnel)			190	135	71.05%
71	Denton	C	21	1	4.76%
88	Lake Dallas	C	18	10	55.56%
120	Wichita Falls	C	23	20	86.96%
169	Wichita Falls	C	10	8	80.00%
198	Archer City	C	25	22	88.00%
202	Wichita Falls	C	12	10	83.33%
209	Seymour (Inactive)				0.00%
220	Nocona	C	21	14	66.67%
264	Burkburnett	C	27	25	92.59%
550	Pilot Point	C	33	25	75.76%

**SONS OF THE AMERICAN LEGION
DETACHMENT OF TEXAS
MEMBERSHIP REPORT**

Updated as of 04/12/2019

Sqdn #	Location		Goal	Actual	Percentage
DIVISION 2 (David L. Moore Jr.)		C	1789	1469	82.11%
Dist.2 (Alton Faulkner)			180	134	74.44%
7	Port Arthur	C	29	0	0.00%
78	Jasper	C	13	0	0.00%
33	Beaumont(Inactive)				0.00%
49	Orange	C	21	20	95.24%
393	Cleveland	C	37	38	102.70%
493	Nederland	C	32	27	84.38%
817	Beaumont	C	48	49	102.08%

Dist. 6 (Kenneth F. Peters Jr.)			671	574	85.54%
22	Corsicana	C	30	26	86.67%
50	Cleburne	C	118	91	77.12%
159	Bryan	C	23	26	113.04%
361	Ennis	C	150	109	72.67%
388	Midlothian	C	41	42	102.44%
426	Alvarado	C	50	39	78.00%
491	Granbury	C	148	152	102.70%
522	Whitney	C	111	89	80.18%
648	Rio Vista (Inactive)		0	0	0.00%

Dist. 7 (Rolf Austin)			303	260	85.81%
84	Madisonville	C	10	1	10.00%
85	Palestine		10	1	10.00%
95	Huntsville	C	77	65	84.42%
113	Lufkin		10		0.00%
134	Crockett	C	26	28	107.69%
212	Coldspring		10		0.00%
312	Livingston		10		0.00%
402	Livingston	C	35	50	142.86%
618	Willis	C	55	62	112.73%
629	Coldspring	C	60	53	88.33%

Updated as of 04/12/2019

Sqdn #	Location		Goal	Actual	Percentage
Dist.8 (Anthony Lambert)		C	134	65	48.51%
127	Tomball	C	10	7	70.00%
499	Galena Park	C	14	0	0.00%
560	Houston	C	53	31	58.49%
578	Houston	C	13	0	0.00%
586	Houston	C	11	8	72.73%
644	Channelview	C	10	1	10.00%
658	Crosby	C	23	18	78.26%

Dist.11 (Roy Fowler)			249	195	78.31%
42	Gatesville	C	22	16	72.73%
55	Belton	C	17	6	35.29%
121	Waco	C	48	38	79.17%
133	Temple(INACTIVE10)	C			0.00%
223	Killeen	C	28	29	103.57%
273	McGregor	C	54	47	87.04%
322	Clifton	C	27	24	88.89%
573	Harker Heights	C	53	35	66.04%
582	Copperas Cove(INACTIVE 10)		0		0.00%

Dist.22 (Dustin L. Moore)			252	241	95.63%
472	Houston	C	42	50	119.05%
490	Houston	C	106	102	96.23%
521	Pasadena	C	44	38	86.36%
594	Houston	C	10	1	10.00%
654	Houston	C	40	36	90.00%
164	Katy	C	10	14	1.4

**SONS OF THE AMERICAN LEGION
DETACHMENT OF TEXAS
MEMBERSHIP REPORT**

Sqdn #	Location		Goal	Actual	Percentage
DIVISION 3 (Robert Ruiz)			1959	1450	74.02%
Dist. 9 (Richard Huntley)			663	422	63.65%
89	Texas City	C	20	6	30.00%
143	Schulenburg	C	17	15	88.24%
166	Victoria	C	19	18	94.74%
200	Wallis	C	33	27	81.82%
226	East Bernard	C	20	15	75.00%
241	Angleton	C	60	37	61.67%
251	El Campo (INACTIVE 10)				0.00%
271	Rosenberg	C	51	46	90.20%
291	San Leon	C	83	0	0.00%
392	Moulton	C	46	36	78.26%
459	Hempstead	C	10	0	0.00%
503	W. Columbia (INACTIVE 10)				0.00%
554	League City	C	76	45	59.21%
649	Blessing	C	210	175	83.33%
942	Sugarland	C	18	2	11.11%
Dist. 10 Richard V. Armstrong II			287	167	58.19%
76	Austin	C	16	13	81.25%
83	Austin	C	83	50	60.24%
177	Luling	C	44	20	45.45%
242	Burton	C	30	29	96.67%
295	Elgin		12		0.00%
317	Jarrell	C	10	11	110.00%
447	Round Rock	C	54	43	79.63%
533	Bastrop	C	38	1	2.63%

Sqdn #	Location		Goal	Actual	Percentage
Dist. 14 (James R. Pickett Sr.)			225	217	96.44%
99	Kingsville	C	49	51	104.08%
179	New Braunfels	C	81	83	102.47%
245	Seguin	C	64	58	90.63%
363	Rockport	C	12	13	108.33%
364	Corpus Christi	C	19	12	63.16%
Dist. 15 (Alonzo Calvillo)			296	279	94.26%
37	McAllen	C	61	56	91.80%
43	Brownsville	C	17	8	47.06%
93	Mission	C	33	22	66.67%
101	Pharr	C	10	11	110.00%
172	Mercedes	C	103	104	100.97%
205	Harlingen	C	14	14	100.00%
390	Raymondville	C	12	12	100.00%
439	La Feria	C	46	52	113.04%
Dist. 20 ()			488	365	74.80%
2	San Antonio	C	19	10	52.63%
300	San Antonio	C	53	38	71.70%
336	San Antonio		10		0.00%
399	San Antonio	C	11	8	72.73%
443	Somerset	C	67	20	29.85%
579	San Antonio	C	43	35	81.40%
592	San Antonio	C	55	31	56.36%
593	Converse	C	123	127	103.25%
667	Universal City	C	60	51	85.00%
828	San Antonio	C	47	45	95.74%

Updated as of 04/12/2019

**SONS OF THE AMERICAN LEGION
DETACHMENT OF TEXAS
MEMBERSHIP REPORT**

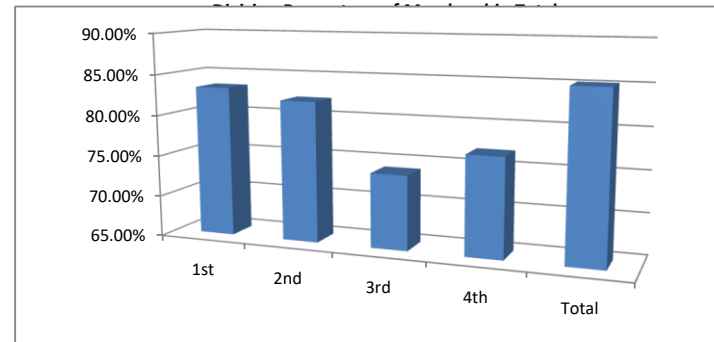
Sqdn #	Location		Goal	Actual	Percentage
DIVISION 4 (Ken Dorsett)			919	707	76.93%
Dist. 16 (Ken Dorsett)			448	308	68.75%
19	Midland	C	126	87	69.05%
36	El Paso	C	26	21	80.77%
58	El Paso	C	25	17	68.00%
79	Alpine	C	19	0	0.00%
119	Midland	C	18	6	33.33%
253	Big Lake	C	25	23	92.00%
339	Kermit	C	32	26	81.25%
430	Odessa	C	110	93	84.55%
598	Horizon City	C	52	22	42.31%
653	Terlingua(INACTIVE)		0		0.00%
692	El Paso	C	15	13	86.67%
Dist. 17 (No Commander)			216	208	96.30%
57	Abilene	C	41	43	104.88%
75	Mineral Wells	C	75	75	100.00%
82	Baird	C	27	20	74.07%
163	Weatherford	C	15	13	86.67%
181	Snyder	C	22	32	145.45%
227	Roscoe	C	36	25	69.44%

Sqdn #	Location		Goal	Actual	Percentage
Dist. 18 (No Commander)			73	56	76.71%
68	Shamrock	C	47	34	72.34%
344	Claude	C	13	10	76.92%
635	Darrouzett	C	13	12	92.31%

Dist. 19 (No Commader)			12	12	100.00%
575	Lubbock	C	12	12	100.00%

Dist. 21 ()			170	123	72.35%
208	Kerrville	C	94	93	98.94%
308	Bangs		14		0.00%
370	Llano		10		0.00%
410	Lakehills	C	30	30	100.00%
470	Lake Brownwood		10		0.00%
487	Priddy	C	12	0	0.00%

DETACHMENT GOAL		6774	5382	79.45%
10 Percent	9/14/2018	632	4750	
25 Percent:	10/13/2018	1580	3802	
35 Percent:	11/15/2018	2212	3170	
45 Percent:	12/13/2018	2844	2538	
60 Percent:	1/17/2019	3793	1589	
75 Percent:	2/13/2019	4741	641	
80 Percent:	3/13/2019	5057	325	
90 Percent:	4/10/2019	5689	-307	
100 Percent:	5/8/2019	6321	-939	
105 Percent	7/24/2019	6637	-1255	



UPDATED 03/18/2019

