

SONS OF THE AMERICAN LEGION DETACHMENT OF TEXAS MEMBERSHIP REPORT

Updated as of 10/16/2021

Sqdn #	Location		Goal	Actual	Percentage
DIVISION 1 (Ed Parnell)		C	1910	614	32.15%
Dist. 1 (Chad Roden)			129	10	7.75%
243	Mt. Vernon	C	74		0.00%
248	Hooks		10		0.00%
267	Marshall	C	35	10	28.57%
488	New Boston	C	10		0.00%

Dist. 3 (David Gilbert)			142	23	16.20%
12	Tyler		43	21	48.84%
15	Lindale		29	2	6.90%
320	Gilmer		11		0.00%
353	Carthage	C	23		0.00%
418	Troup		36		0.00%

Dist. 4 (Gary Winters)			665	238	35.79%
17	Greenville	C	28	12	42.86%
21	The Colony	C	66	24	36.36%
29	Sherman		12	3	25.00%
62	Denison		41	13	31.71%
96	McKinney	C	46	7	15.22%
165	Kaufman	C	26	8	30.77%
182	Little Elm (Inactive)				0.00%
231	Pottsboro	C	136	27	19.85%
283	Bonham	C	39	14	35.90%
310	Gun Barrel City	C	77	28	36.36%
321	Plano	C	59	43	72.88%
376	Van Alstyne	C	94	43	45.74%
517	W. Tawakoni	C	41	16	39.02%

Sqdn #	Location		Goal	Actual	Percentage
Dist. 5 (Lewis Elam)			374	176	47.06%
81	Duncanville	C	34	2	5.88%
111	Cedar Hill		14	6	42.86%
275	Dallas	C	28	24	85.71%
184	Grand Prairie (Inactive)				0.00%
368	Richardson	C	24	3	12.50%
424	Dallas	C	21	16	76.19%
453	Dallas	C	131	67	51.15%
504	Mesquite	C	24		0.00%
507	Balch Springs	C	21		0.00%
511	Dallas	C	25	22	88.00%
597	Carrollton	C	52	36	69.23%

Dist. 12 (David Owens)			378	125	33.07%
60	Fort Worth		11		0.00%
135	Fort Worth				0.00%
297	Benbrook	C	31	11	35.48%
356	Azle	C	10		0.00%
379	Bedford	C	160	85	53.13%
516	Fort Worth	C	28		0.00%
569	Fort Worth	C	35	9	25.71%
624	Mansfield	C	83	9	10.84%
655	Haltom City		10		0.00%
838	Fort Worth	C	10	11	110.00%

Dist. 13 (Michael Carriger)			222	42	18.92%
71	Denton	C	18	1	5.56%
88	Lake Dallas		32		0.00%
120	Wichita Falls	C	23	8	34.78%
169	Wichita Falls		14		0.00%
198	Archer City	C	20		0.00%
202	Wichita Falls		14		0.00%
209	Seymour (Inactive)				0.00%
220	Nocona	C	16		0.00%
264	Burkburnett	C	37	6	16.22%
550	Pilot Point	C	48	27	56.25%

SONS OF THE AMERICAN LEGION DETACHMENT OF TEXAS MEMBERSHIP REPORT

Updated as of 10/16/2021

Sqdn #	Location		Goal	Actual	Percentage
DIVISION 2 (Clifton Guillory)		C	1589	389	24.48%
Dist.2			159	40	25.16%
7	Port Arthur		10		0.00%
33	Beaumont (Inactive)				0.00%
49	Orange		21	2	9.52%
78	Jasper		10		0.00%
393	Cleveland		18	1	5.56%
493	Nederland	C	37	1	2.70%
817	Beaumont	C	63	36	57.14%

Dist. 6 (Kenneth F. Peters Jr.)			535	109	20.37%
22	Corsicana		28	15	53.57%
50	Cleburne	C	85	31	36.47%
159	Bryan		26	6	23.08%
361	Ennis	C	115	1	0.87%
388	Midlothian		51	8	15.69%
426	Alvarado		35		0.00%
491	Granbury	C	99	1	1.01%
522	Whitney	C	96	47	48.96%
648	Rio Vista (Inactive?)	C			0.00%

Dist. 7 (Chares Scott)			297	88	29.63%
84	Madisonville		32	1	3.13%
85	Palestine	C	16	1	6.25%
95	Huntsville	C	62	31	50.00%
113	Lufkin INACTIVE				0.00%
134	Crockett		20		0.00%
212	Coldspring INACTIVE				0.00%
312	Livingston INACTIVE				0.00%
402	Livingston		28		0.00%
615	New Caney		13		0.00%
618	Willis	C	77	33	42.86%
629	Coldspring	C	49	22	44.90%

Sqdn #	Location		Goal	Actual	Percentage
Dist.8			129	12	9.30%
127	Tomball	C	10		0.00%
323	Baytown		10		0.00%
499	Galena Park	C	12		0.00%
560	Houston		50	1	2.00%
578	Houston		10		0.00%
586	Houston	C	12	3	25.00%
644	Channelview		10	1	10.00%
658	Crosby	C	15	7	46.67%

Dist.11 (Dustin Fowler)			235	98	41.70%
42	Gatesville	C	21		0.00%
55	Belton (INACTIVE)				0.00%
121	Waco	C	26	17	65.38%
133	Temple	C	31	33	106.45%
223	Killeen		25	6	24.00%
273	McGregor		62	6	9.68%
322	Clifton	C	24	16	66.67%
573	Harker Heights	C	46	20	43.48%
582	Copperas Cove (INACTIVE 10)				0.00%

Dist.22 (Dustin Moore)			234	42	17.95%
164	Katy	C	20		0.00%
472	Pasadena	C	29	4	13.79%
490	Houston	C	93	36	38.71%
521	Pasadena		27	2	7.41%
594	Houston		10		0.00%
654	Houston	C	55		0.00%

SONS OF THE AMERICAN LEGION DETACHMENT OF TEXAS MEMBERSHIP REPORT

Updated as of 10/16/2021

Sqdn #	Location		Goal	Actual	Percentage
DIVISION 3 (Rick Huntley)			1593	343	21.53%
Dist. 9 (Jack Evans)			532	126	23.68%
89	Texas City	C	23	11	47.83%
143	Schulenburg		14		0.00%
166	Victoria		12		0.00%
200	Wallis		26	1	3.85%
226	East Bernard		18		0.00%
241	Angleton	C	10	2	20.00%
251	El Campo (INACTIVE 10)				0.00%
271	Rosenberg		48		0.00%
291	San Leon	C	82		0.00%
392	Moulton	C	55	46	83.64%
459	Hempstead		10		0.00%
503	W. Columbia (INACTIVE 10)				0.00%
554	League City	C	86	62	72.09%
649	Blessing		137	3	2.19%
942	Sugarland	C	11	1	9.09%

Dist. 10 (Brad Pack)			243	43	17.70%
76	Austin	C	14	1	7.14%
83	Austin	C	33	11	33.33%
177	Luling	C	39		0.00%
242	Burton	C	34		0.00%
317	Jarrell	C	24		0.00%
447	Round Rock	C	64	29	45.31%
533	Bastrop	C	35	2	5.71%

345 Detachment Post (Ghost)

Updated as of 10/16/2021

Sqdn #	Location		Goal	Actual	Percentage
Dist. 14 (Kevin Baker)			250	45	18.00%
99	Kingsville	C	53	5	9.43%
179	New Braunfels	C	50	19	38.00%
245	Seguin	C	61	12	19.67%
363	Rockport	C	22		0.00%
364	Corpus Christi	C	11	9	81.82%
369	Westhoff		53		0.00%
Dist. 15 (David Gonzalez)			214	30	14.02%
37	McAllen	C	44	17	38.64%
43	Brownsville	C	12	9	75.00%
93	Mission		31		0.00%
101	Pharr		10		0.00%
172	Mercedes	C	27	4	14.81%
205	Harlingen		10		0.00%
390	Raymondville		17		0.00%
439	La Feria		43		0.00%
464	Weslaco		10		0.00%
498	Port Isabel		10		0.00%
Dist. 20 (George Alva)			354	99	27.97%
2	San Antonio	C	10		0.00%
300	San Antonio		38		0.00%
309	Helotes	C	13	6	46.15%
336	San Antonio		10		0.00%
399	San Antonio		10		0.00%
443	Somerset	C	25	7	28.00%
579	San Antonio	C	35	8	22.86%
592	San Antonio		10		0.00%
593	Converse	C	116	50	43.10%
667	Universal City	C	58	27	46.55%
828	San Antonio		29	1	3.45%

SONS OF THE AMERICAN LEGION DETACHMENT OF TEXAS MEMBERSHIP REPORT

Sqdn #	Location		Goal	Actual	Percentage
DIVISION 4 (Ken Dorsett)			758	103	13.59%
Dist. 16 (David Blair)			344	36	10.47%
19	Midland	C	84		0.00%
36	El Paso	C	18	5	27.78%
58	El Paso	C	18	17	94.44%
79	Alpine		20		0.00%
119	Midland		10		0.00%
122	Anthony	C	14	2	14.29%
253	Big Lake		30		0.00%
339	Kermit	C	27	4	14.81%
430	Odessa	C	94	8	8.51%
598	Horizon City	C	19		0.00%
653	Terlingua(INACTIVE)				0.00%
692	El Paso		10		0.00%
Dist. 17 ()			196	36	18.37%
57	Abilene	C	36	12	33.33%
75	Mineral Wells		56	1	1.79%
82	Baird	C	40	11	27.50%
163	Weatherford	C	26	12	46.15%
181	Snyder		10		0.00%
227	Roscoe	C	28		0.00%

Sqdn #	Location		Goal	Actual	Percentage
Dist. 18			43	0	0.00%
68	Shamrock		10		0.00%
344	Claude	C	10		0.00%
635	Darrouzett		13		0.00%
575	Lubbock		10		0.00%

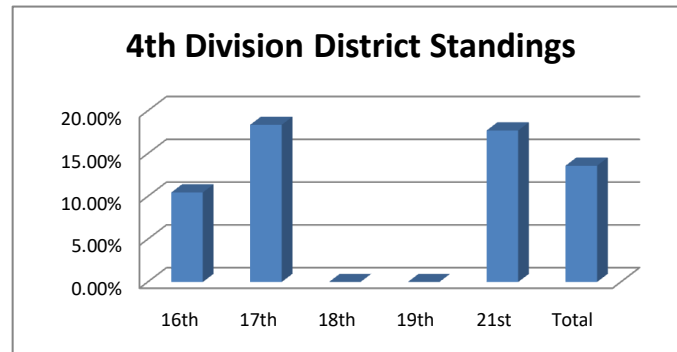
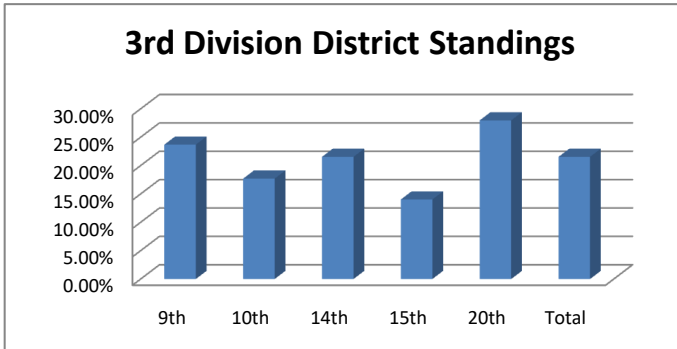
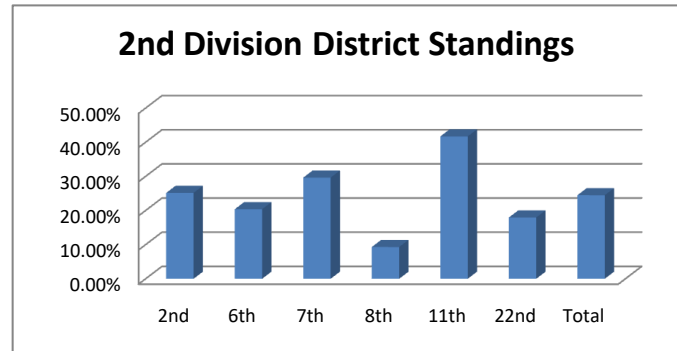
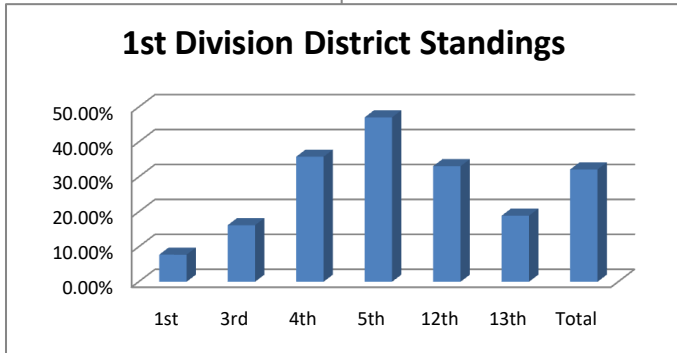
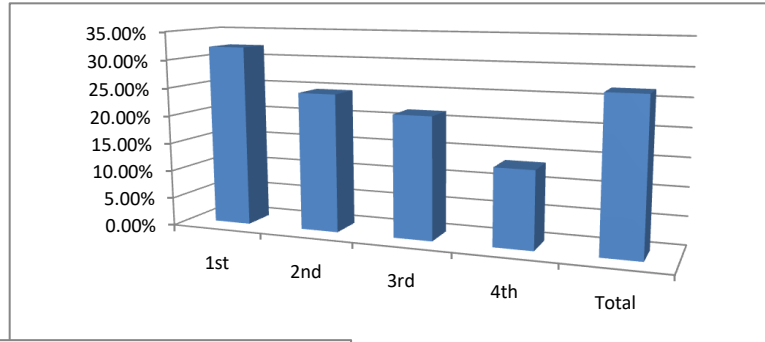
Sqdn #	Location		Goal	Actual	Percentage
Dist. 21 ()			175	31	17.71%
208	Kerrville	C	86	25	29.07%
313	Boerne	C	35		0.00%
370	Llano		10		0.00%
410	Lakehills	C	24	6	25.00%
470	Lake Brownwood		10		0.00%
487	Priddy		10		0.00%

		Goal	Actual	Percentage
DETACHMENT GOAL:		5850	1449	24.77%
NATIONAL GOAL		5425	1449	26.71%
10 Percent	9/22/2021	543	907	
25 Percent:	10/14/2021	1356	93	
35 Percent:	11/10/2021	1899	-450	
45 Percent:	12/8/2021	2441	-992	
60 Percent:	1/20/2022	3255	-1806	
75 Percent:	2/9/2022	4069	-2620	
80 Percent:	3/9/2022	4340	-2891	
90 Percent:	4/13/2022	4883	-3434	
100 Percent:	5/11/2022	5425	-3976	
105 Percent	7/28/2022	5696	-4247	

SONS OF THE AMERICAN LEGION DETACHMENT OF TEXAS MEMBERSHIP REPORT

Division Percentage of Membership Totals

SONS OF THE AMERICAN LEGION DETACHMENT OF TEXAS MEMBERSHIP REPORT



SONS OF THE AMERICAN LEGION DETACHMENT OF TEXAS MEMBERSHIP REPORT

Updated as of 10/16/2021

