

**SONS OF THE AMERICAN LEGION  
DETACHMENT OF TEXAS  
MEMBERSHIP REPORT**

Updated as of 09/20/2023

Sqdn #	Location		Goal	Actual	Percentage
<b>DIVISION 1 (Lewis Elam)</b>		<b>C</b>	<b>2134</b>	<b>530</b>	<b>24.84%</b>
<b>Dist. 1 (Chad Roden)</b>		<b>C</b>	<b>144</b>	<b>28</b>	<b>19.44%</b>
92	Morris County*	CR	22	6	27.27%
243	Mt. Vernon	C	41	14	34.15%
248	Hooks	C	12	0	0.00%
267	Marshall	C	37	4	10.81%
488	New Boston	C	32	4	12.50%

<b>Dist. 3 (David Gilbert)</b>			<b>144</b>	<b>25</b>	<b>17.36%</b>
12	Tyler*	CR	46	25	54.35%
15	Lindale		27	0	0.00%
320	Gilmer	R	13	0	0.00%
353	Carthage	C	22	0	0.00%
418	Troup	CR	36	0	0.00%

<b>Dist. 4 (Ray Reynolds)</b>		<b>C</b>	<b>688</b>	<b>102</b>	<b>14.83%</b>
17	Greenville	CR	27	5	18.52%
21	The Colony*	CR	52	18	34.62%
29	Sherman	C	12	3	25.00%
62	Denison	C	38	8	21.05%
96	McKinney	C	42	9	21.43%
100	Royce City				0.00%
165	Kaufman	C	23	11	47.83%
231	Pottsboro	CR	122	2	1.64%
283	Bonham	C	50	1	2.00%
310	Gun Barrel City*	C	93	14	15.05%
321	Plano*	CR	63	19	30.16%
376	Plano*		138	1	0.72%
517	Plano*	C	28	11	39.29%

An asterisk (\*) next to the location donotes SDR has been filed.

C = Certified & R = 2023 Consolidated Squadron Report

Sqdn #	Location		Goal	Actual	Percentage
<b>Dist. 5 (Lewis Elam)</b>		<b>CR</b>	<b>532</b>	<b>226</b>	<b>42.48%</b>
81	Duncanville*	CR	57	35	61.40%
111	Cedar Hill*	CR	24	22	91.67%
275	Dallas*	CR	35	0	0.00%
368	Richardson*	CR	33	4	12.12%
424	Dallas*	CR	41	19	46.34%
453	Dallas*	CR	162	64	39.51%
504	Mesquite*	CR	36	39	108.33%
507	Balch Springs*	CR	25	0	0.00%
511	Dallas*	CR	37	4	10.81%
597	Carrollton*	CR	82	39	47.56%

<b>Dist. 12 (David Owens)</b>		<b>C</b>	<b>418</b>	<b>119</b>	<b>28.47%</b>
60	Arlington				0.00%
297	Benbrook*	C	36	2	5.56%
356	Azle				0.00%
379	Bedford*	CR	175	55	31.43%
516	Fort Worth	C	23	20	86.96%
569	Fort Worth*	C	32	1	3.13%
624	Mansfield		83	26	31.33%
626	Fort Worth		13	1	7.69%
655	Haltom City	R	44	14	31.82%
838	Fort Worth	C	12	0	0.00%

<b>Dist. 13 (Michael Carriger)</b>			<b>208</b>	<b>30</b>	<b>14.42%</b>
71	Denton			1	#DIV/0!
88	Lake Dallas*	CR	42	11	26.19%
120	Wichita Falls*	CR	19	0	0.00%
169	Wichita Falls	C	13	0	0.00%
198	Archer City	CR	12	0	0.00%
202	Wichita Falls	C	17	0	0.00%
220	Nocona	C	12	0	0.00%
264	Burkburnett	C	39	4	10.26%
268	Sanger*	C	12	1	8.33%
414	Olney				0.00%
550	Pilot Point	C	42	13	30.95%

**SONS OF THE AMERICAN LEGION  
DETACHMENT OF TEXAS  
MEMBERSHIP REPORT**

Updated as of 09/20/2023					
Sqdn #	Location		Goal	Actual	Percentage
<b>DIVISION 2 (Rolf Austin)</b>		<b>C</b>	<b>1561</b>	<b>373</b>	<b>23.89%</b>
<b>Dist.2 ( )</b>			<b>149</b>	<b>50</b>	<b>33.56%</b>
7	Port Arthur		12	0	0.00%
49	Orange	C	25	7	28.00%
78	Jasper				0.00%
393	Cleveland		12	1	8.33%
493	Nederland	CR	20	2	10.00%
817	Beaumont*	CR	80	40	50.00%

<b>Dist. 6 (Kenneth F. Peters Jr.)</b>		<b>C</b>	<b>507</b>	<b>78</b>	<b>15.38%</b>
22	Corsicana*	C	34	1	2.94%
50	Cleburne*	CR	85	16	18.82%
159	Bryan	CR	28	1	3.57%
361	Ennis*	C	93	3	3.23%
388	Midlothian		23	0	0.00%
426	Alvarado*	CR	35	18	51.43%
491	Granbury	C	118	1	0.85%
522	Whitney*	CR	91	38	41.76%

<b>Dist. 7 (Charles Scott)</b>		<b>C</b>	<b>290</b>	<b>57</b>	<b>19.66%</b>
84	Madisonville*	C	33	1	3.03%
85	Palestine		12	2	16.67%
95	Huntsville	C	59	22	37.29%
134	Crockett*	C	27	0	0.00%
402	Livingston	C	29	0	0.00%
615	New Caney				0.00%
618	Willis*	CR	88	32	36.36%
629	Coldspring	C	42	0	0.00%

Sqdn #	Location		Goal	Actual	Percentage
<b>Dist.8 (Richard Voorhies)</b>		<b>C</b>	<b>106</b>	<b>15</b>	<b>14.15%</b>
127	Tomball*	C	21	2	9.52%
323	Baytown				0.00%
499	Galena Park				0.00%
560	Houston	C	53	2	3.77%
578	Houston				0.00%
586	Houston*	CR	19	2	10.53%
644	Channelview*	C	13	8	61.54%
658	Crosby			1	#DIV/0!

<b>Dist.11 (Dustin Fowler)</b>		<b>C</b>	<b>301</b>	<b>113</b>	<b>37.54%</b>
42	Gatesville*	C	17	19	111.76%
55	Belton (inactive)	CR	12	1	8.33%
121	Waco	C	18	0	0.00%
133	Temple	C	47	47	100.00%
223	Killeen	C	28	20	71.43%
273	McGregor*	C	86	22	25.58%
322	Clifton	C	25	0	0.00%
573	Harker Heights*	C	68	4	5.88%

<b>Dist.22 (Juan Torres)</b>		<b>C</b>	<b>208</b>	<b>60</b>	<b>28.85%</b>
77	Houston		14	0	0.00%
164	Katy	R	21	0	0.00%
319	Houston*	C	16	15	93.75%
472	Houston*	CR	29	4	13.79%
490	Houston	C	59	22	37.29%
521	Pasadena	C	26	13	50.00%
654	Houston	CR	43	6	13.95%

An asterisk (\*) next to the location denotes SDR has been filed.

C = Certified & R = 2023 Consolidated Squadron Report

**SONS OF THE AMERICAN LEGION  
DETACHMENT OF TEXAS  
MEMBERSHIP REPORT**

Updated as of 09/20/2023					
Sqdn #	Location		Goal	Actual	Percentage
<b>DIVISION 3 (John Jellison)</b>		<b>C</b>	<b>1594</b>	<b>372</b>	<b>23.34%</b>
<b>Dist. 9 (Paul Thorton)</b>		<b>C</b>	<b>380</b>	<b>71</b>	<b>18.68%</b>
89	Texas City*	CR	22	14	63.64%
200	Wallis	C	32	1	3.13%
241	Angleton				0.00%
271	Rosenberg		48	0	0.00%
291	San Leon	C	103	1	0.97%
459	Hempstead				0.00%
554	League City	CR	107	32	29.91%
602	Shelby	C	54	23	
942	Sugarland	C	14	0	0.00%

<b>Dist. 10 (Brad Pack)</b>		<b>C</b>	<b>235</b>	<b>76</b>	<b>32.34%</b>
76	Austin	C	14	1	7.14%
83	Austin*	CR	25	2	8.00%
177	Luling	C	30	2	6.67%
242	Burton*	C	34	0	0.00%
295	Elgin				0.00%
317	Jarrell		27	0	0.00%
447	Round Rock	CR	61	53	86.89%
533	Bastrop*	CR	44	18	40.91%

Sqdn #	Location		Goal	Actual	Percentage
<b>Dist. 14 (Kevin Baker)</b>		<b>C</b>	<b>250</b>	<b>51</b>	<b>20.40%</b>
99	Kingsville*	C	47	18	38.30%
179	New Braunfels*	CR	37	13	35.14%
245	Seguin*	CR	61	20	32.79%
363	Rockport	C	25	0	0.00%
364	Corpus Christi	C	19	0	0.00%
369	Westhoff*	C	61	0	0.00%

**345 Detachment Post (Ghost) DISTRICT 99**

An asterisk (\*) next to the location donotes SDR has been filed.

C = Certified & R = 2023 Consolidated Squadron Report

Sqdn #	Location		Goal	Actual	Percentage
<b>Dist. 15 (David Gonzalez)</b>		<b>C</b>	<b>182</b>	<b>15</b>	<b>8.24%</b>
37	McAllen*	CR	36	5	13.89%
43	Brownsville*	CR	14	9	64.29%
93	Mission*		33	1	3.03%
101	Pharr				0.00%
172	Mercedes*	R	18	0	0.00%
205	Harlingen		17	0	0.00%
390	Raymondville	C	20	0	0.00%
439	La Feria*	C	44	0	0.00%
464	Weslaco				0.00%
498	Port Isabel				0.00%

<b>Dist. 19 ( Herb Fish)</b>			<b>220</b>	<b>54</b>	<b>24.55%</b>
143	Schulenberg*	CR	15	0	0.00%
166	Victoria				0.00%
226	East Bernard	C	16	0	0.00%
392	Moulton	C	65	52	80.00%
649	Blessing	C	124	2	1.61%

<b>Dist. 20 (George Alva)</b>			<b>327</b>	<b>105</b>	<b>32.11%</b>
2	San Antonio				0.00%
284	San Antonio	C	16	0	
300	San Antonio	CR	53	5	9.43%
309	Helotes*	CR	13	4	30.77%
336	San Antonio				0.00%
399	San Antonio				0.00%
443	Somerset*			17	#DIV/0!
485	San Antonio				0.00%
539	St. Hedwig		26	1	3.85%
579	San Antonio*	C	29	2	6.90%
592	San Antonio				0.00%
593	Converse	CR	129	49	37.98%
667	Universal City*	C	61	27	44.26%
828	San Antonio	R	39	0	0.00%

**SONS OF THE AMERICAN LEGION  
DETACHMENT OF TEXAS  
MEMBERSHIP REPORT**

Updated as of 09/20/2023					
Sqdn #	Location		Goal	Actual	Percentage
<b>DIVISION 4 (Ken Dorsett)</b>		<b>C</b>	<b>678</b>	<b>117</b>	<b>17.26%</b>
<b>Dist. 16 (David Blair)</b>		<b>C</b>	<b>349</b>	<b>69</b>	<b>19.77%</b>
19	Midland*	CR	104	0	0.00%
36	El Paso*	CR	22	17	77.27%
58	El Paso	CR	34	14	41.18%
79	Alpine		20	1	5.00%
119	Midland	C	12	0	0.00%
122	Anthony		12	0	0.00%
253	Big Lake				0.00%
339	Kermit*	CR	22	21	95.45%
430	Odessa*	CR	98	14	14.29%
598	Horizon City	C	25	2	8.00%
692	El Paso				0.00%

<b>Dist. 17 (Andy Browning)</b>		<b>C</b>	<b>182</b>	<b>26</b>	<b>14.29%</b>
57	Abilene	C	33	12	36.36%
75	Mineral Wells	C	67	6	8.96%
82	Baird	C	35	0	0.00%
163	Weatherford*	C	23	8	34.78%
181	Snyder				0.00%
227	Roscoe		24	0	0.00%


Sqdn #	Location		Goal	Actual	Percentage
<b>Dist. 18 ()</b>			<b>63</b>	<b>11</b>	<b>17.46%</b>
68	Shamrock	C	37	11	29.73%
344	Claude				0.00%
575	Lubbock		12	0	0.00%
635	Darrouzett	C	14	0	0.00%

<b>Dist. 21 (Joey Bess)</b>			<b>84</b>	<b>11</b>	<b>13.10%</b>
208	Kerrville*	CR	72	4	5.56%
313	Boerne				0.00%
370	Llano				0.00%
410	Lakehills	C	12	7	58.33%
470	Lake Brownwood				0.00%
487	Priddy				0.00%

An asterisk (\*) next to the location donotes SDR has been filed.

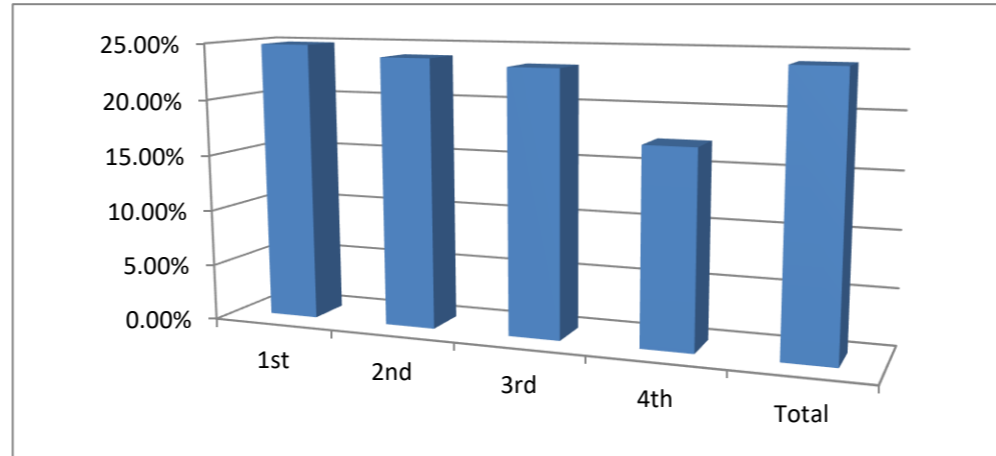
C = Certified & R = 2023 Consolidated Squadron Report

	Goal	Actual	Percentage
<b>DETACHMENT GOAL:</b>	<b>5967</b>	<b>1392</b>	<b>23.33%</b>
<b>NATIONAL GOAL</b>	<b>5783</b>	<b>1392</b>	<b>24.07%</b>
<b>10 Percent</b>	<b>9/14/2022</b>	<b>578</b>	<b>814</b>
<b>25 Percent:</b>	<b>10/19/2022</b>	<b>1446</b>	<b>-54</b>
<b>35 Percent:</b>	<b>11/9/2022</b>	<b>2024</b>	<b>-632</b>
<b>45 Percent:</b>	<b>12/14/2022</b>	<b>2602</b>	<b>-1210</b>
<b>60 Percent:</b>	<b>1/19/2023</b>	<b>3470</b>	<b>-2078</b>
<b>75 Percent:</b>	<b>2/15/2023</b>	<b>4337</b>	<b>-2945</b>
<b>80 Percent:</b>	<b>3/15/2023</b>	<b>4626</b>	<b>-3234</b>
<b>90 Percent:</b>	<b>4/19/2023</b>	<b>5205</b>	<b>-3813</b>
<b>100 Percent:</b>	<b>5/17/2023</b>	<b>5783</b>	<b>-4391</b>
<b>105 Percent:</b>	<b>7/26/2023</b>	<b>6072</b>	<b>-4680</b>

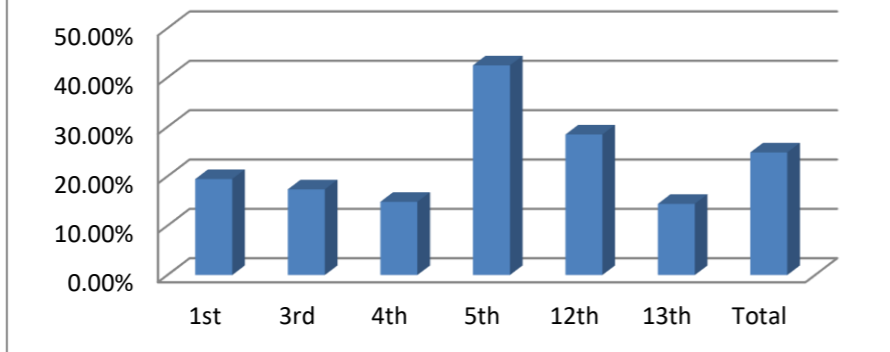
 = Squadrons highlighted like this had zero membership other than PUFLs

**SONS OF THE AMERICAN LEGION  
DETACHMENT OF TEXAS  
MEMBERSHIP REPORT**

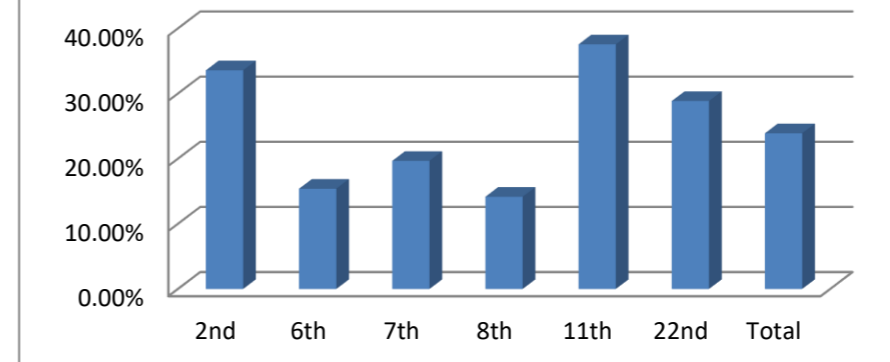
**Division Percentage of Membership Totals**



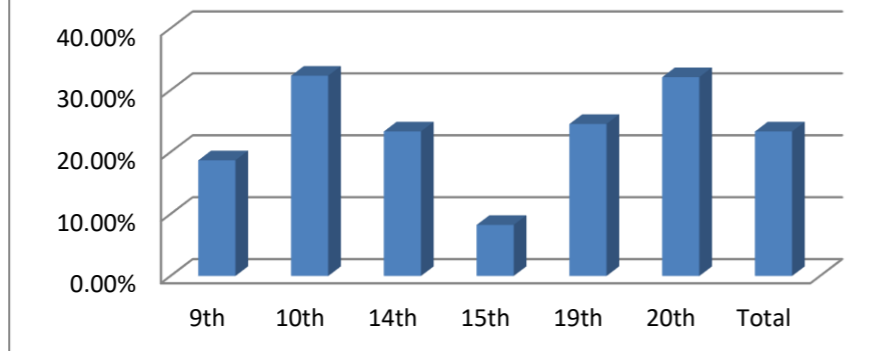
**1st Division District Standings**



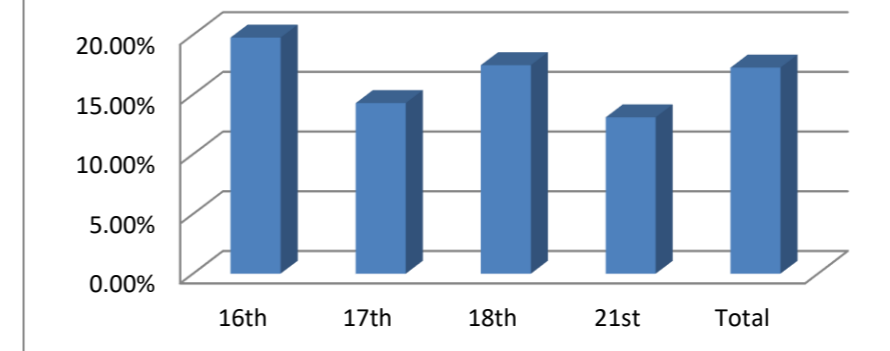
**2nd Division District Standings**



**3rd Division District Standings**



**4th Division District Standings**



**SONS OF THE AMERICAN LEGION  
DETACHMENT OF TEXAS  
MEMBERSHIP REPORT**

Updated as of 09/05/23				
	100% By Jan. 1st	100% by Legion B-Day	100% After Legion B'day	DISTRICT 100%
			1	1) District
1	042 9/05/23	1	2	2) District
2	133 9/05/23	2	3	3) District
3	504 9/05/23	3	4	4) District
4		4	5	5) District
5		5	6	6) District
6		6	7	
7		7	8	
8		8	9	
9		9	10	
10		10	11	
11		11	12	
12		12	13	
13		13	14	
14		14	15	
15		15	16	
16		16	17	
17			18	
18			19	
19			20	
20			21	
21			22	
22			23	
23			24	
24			25	
25			26	
26			27	
27			28	
			29	
			30	